



A development brought to you by Everyday Homes.

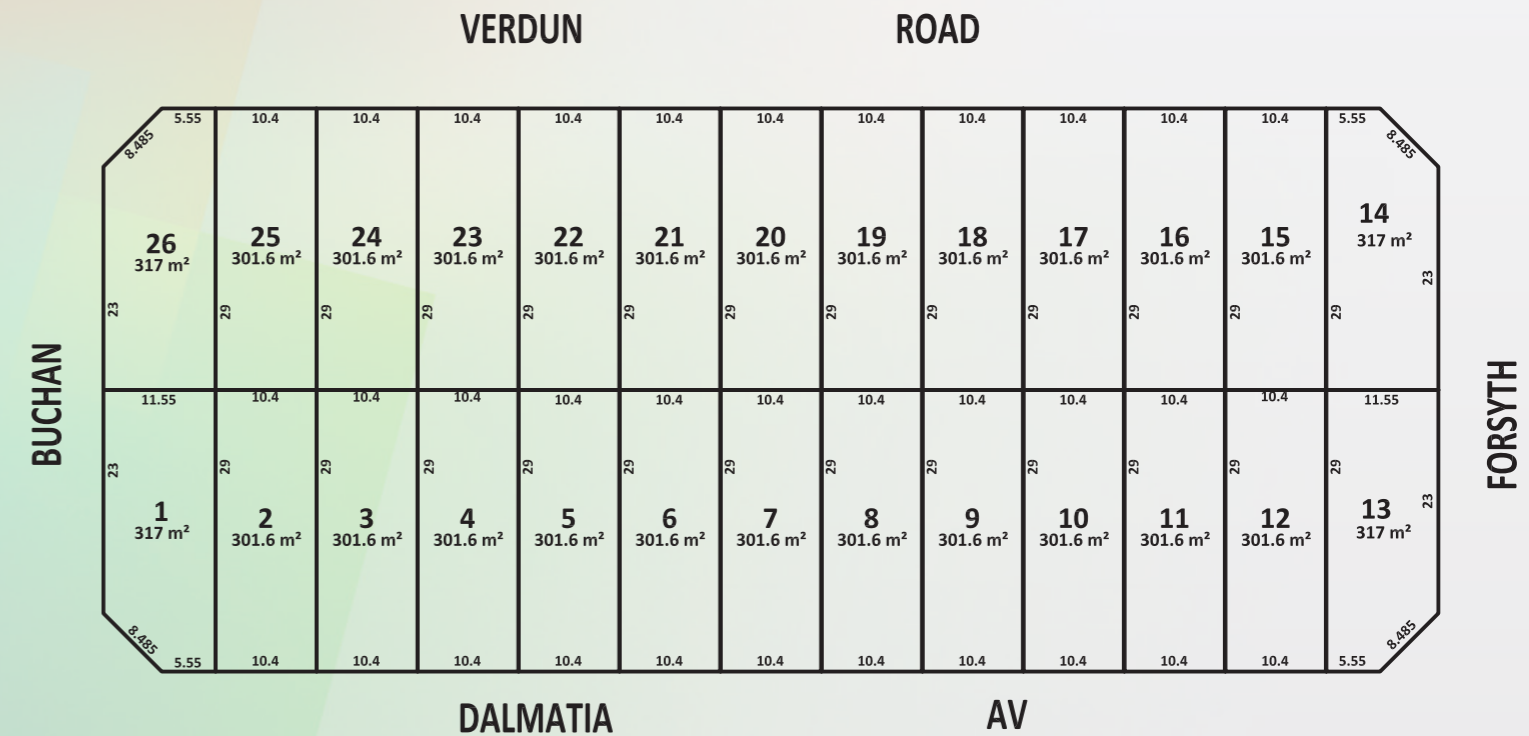
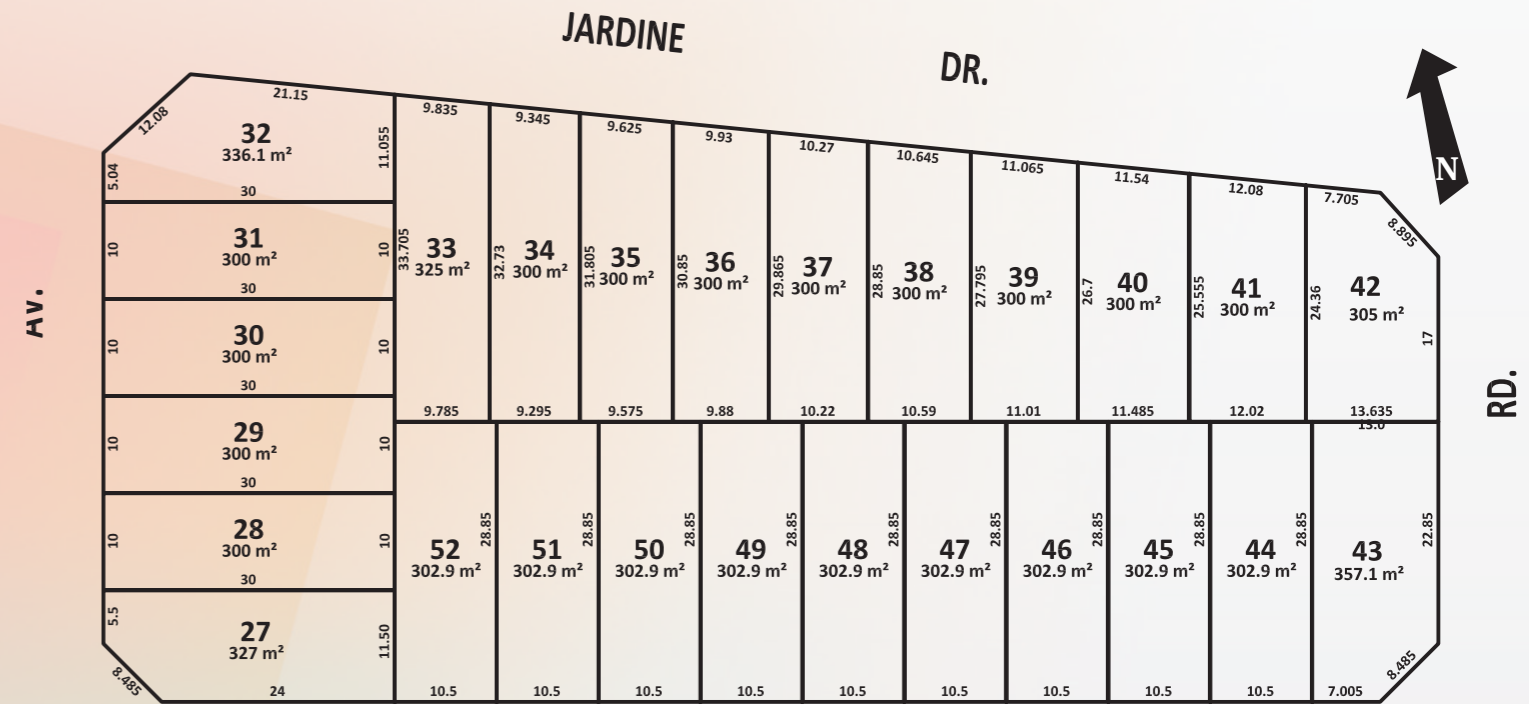
5 Jardine at Edmondson Park consists of 52 home and land packages including a mix of three and four bedroom single storey homes, four bedroom double storey homes and dual occupancy homes. Edmondson Park is a growing community on track to become one of Sydney's prominent regional centres in the South West. It is located approximately 20 minutes from the new Badger's Creek Airport and ideally located right next to the M5 & M7 motorway's. Edmondson Park will see new infrastructure, transport, retail, commercial and employment opportunities in the very near future.

These home and land packages suit first home buyers, investors and established families.

For pricing, home design and floor plans, facade details and list of inclusions, please book an appointment to speak to a New Homes Consultant. Contact information and location details are on the back cover page.



EDMONDSON PARK the heart of Sydney's Booming South West!



Local Shopping, Amenities & Facilities

- Edmondson Park Town Centre under construction, including cinema, community centre, 120 shops, supermarket, department stores, fresh food market, variety of health & community facilities including a medical centre, 24hour gymnasium, childcare, ten-pin bowling, and tavern. First stage of the development opening in 2018.
- Future Leppington Town Centre (Civic precinct, new TAFE campus, council community facilities, health centre, retail shops, commercial division)
- Close to Carnes Hill Marketplace (Woolworths, Big W) & Carnes Hill Community Centre and Library (skate park, library, basketball courts, indoor sports centre, playground, parks, recreational areas)
- Close to Crossroads Homemaker Centre (Fantastic Furniture, Bing Lee, Freedom, Nick Scali, Petbarn, Goodguys, Monkey Mania, Costco, Bunnings Warehouse)
- Close to Liverpool Westfield Shopping Centre, Liverpool Hospital & Sydney South West Private Hospital.

Schools Less Than 5km Away



- St Francis Catholic College - Prep - Yr 12(500m)
- Ingleburn North Public School
- Greenway Park Public School
- Dalmeny Public School
- Holy Spirit Primary School
- St Catherine of Sienna Catholic Primary School
- John Edmondson High School
- William Carey Christian School K-12
- Amity College K-12

Transport

- Edmondson Park Train Station (10-15 minute walk)
- Leppington Train Station (5-10 minute drive)
- Bus Routes 857, 856, 855 (to Narellan, Bringelly, Austral and Liverpool) 864, 852 (to Carnes Hill and Glenfield)



Everyday Homes
Live well in every way



JARDINE

EDMONDSON PARK

**FOR ALL ENQUIRIES OR TO BOOK AN APPOINTMENT, PLEASE CALL US ON:
1300 72 55 00**

**EDMONDSON PARK
SALES & DISPLAY CENTRE**

11 - 13 Talana Hill Drive,
Edmondson Park
Ph: 02 8783 5888

**ORAN PARK
SALES & DISPLAY CENTRE**

Oran Park Display Village
Cnr Webber Loop & Sargent Street
Ph: 02 4601 8101

**LEPPINGTON
SALES & INFORMATION
CENTRE**

Shop 1, 1469 Camden Valley
Way, Leppington
Ph: 02 9606 2800

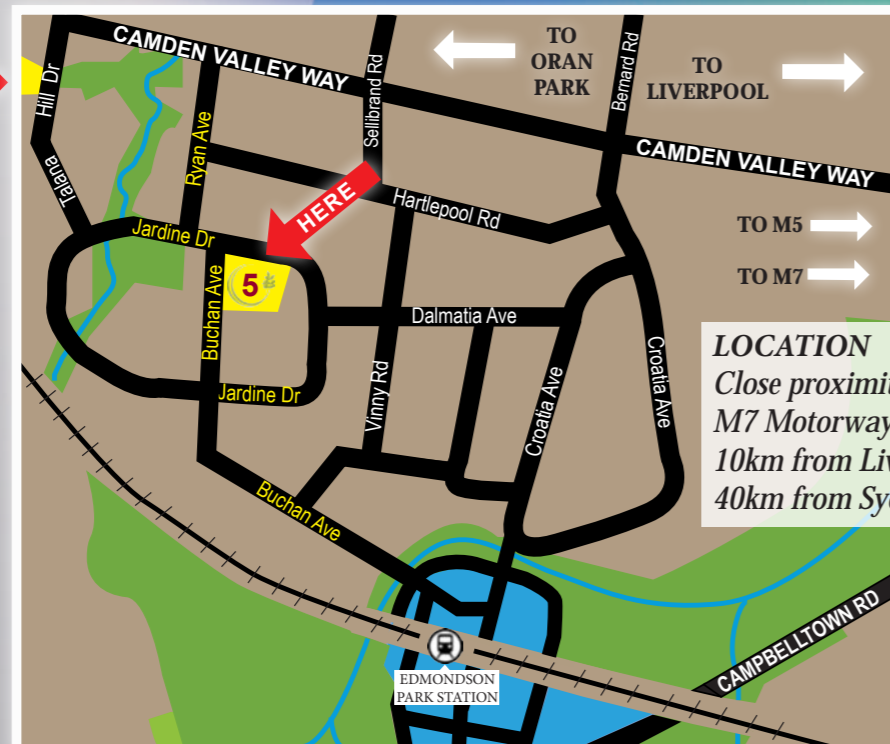
www.everydayhomes.com.au



JARDINE

EDMONDSON PARK

Everyday Homes
Live well in every way
DISPLAY CENTRE



LOCATION
Close proximity to M5 & M7 Motorways
10km from Liverpool CBD
40km from Sydney CBD

ESTATE PLAN

Disclaimer: The information on this brochure is indicative only. Purchasers are advised to refer to the land contract and/or builders contract for accurate dimensions, provisions for easements and building inclusions. Everyday Homes reserves the right to alter the plans and prices without notice.