

# HOME AND LAND PACKAGE

Aston 17 (Como Facade)  
Lot 9643 Neville Street, Oran Park



**Complete  
Living Package**

**5% DEPOSIT & PAY REMAINDER ON COMPLETION**

Illustrative purpose only

## INCLUSIONS - Turn-key Home and Land Package

- Fixed Site Costs
- 180 day maintenance period (double industry standard)
- 2585mm high ceilings
- Floor tiles to living area
- Carpet to remainder
- Concrete driveway
- Vertical blinds to all clear glazed windows
- Instantaneous Rinnai V1500 gas hot-water system
- Insulation (R1.5 walls & R2.5 ceilings)
- Aqua flick mixer taps to vanities, baths & showers
- Double power points
- Exhaust fans to showers
- Perimeter framed shower screen with frameless pivot door
- Toilet suites-closed coupled vitreous china
- B&D Panelmasta garage door
- Semi wall hung vanities with 20mm stone top & drop in bowl
- Category 2 brick range
- Category 2 roof tile range with heavy duty sarking
- 20mm stone kitchen benchtop with square edge finish
- Sheen finish kitchen cupboards
- 900mm freestanding cooker & canopy rangehood
- Alarm
- Electric garage door
- Ducted Air-conditioning

**\$689,500\***

(less \$10,000 design & landscape rebate if applicable)

**4 Bed**

**2 Bath**

**1 Car**

**COREBUILD SYSTEM**

**NO  
PROGRESS  
PAYMENTS**

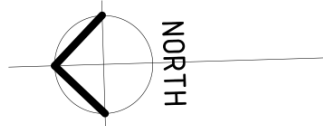


Home Building  
**SINCE  
1981**

ONLY  
**5%  
DEPOSIT**

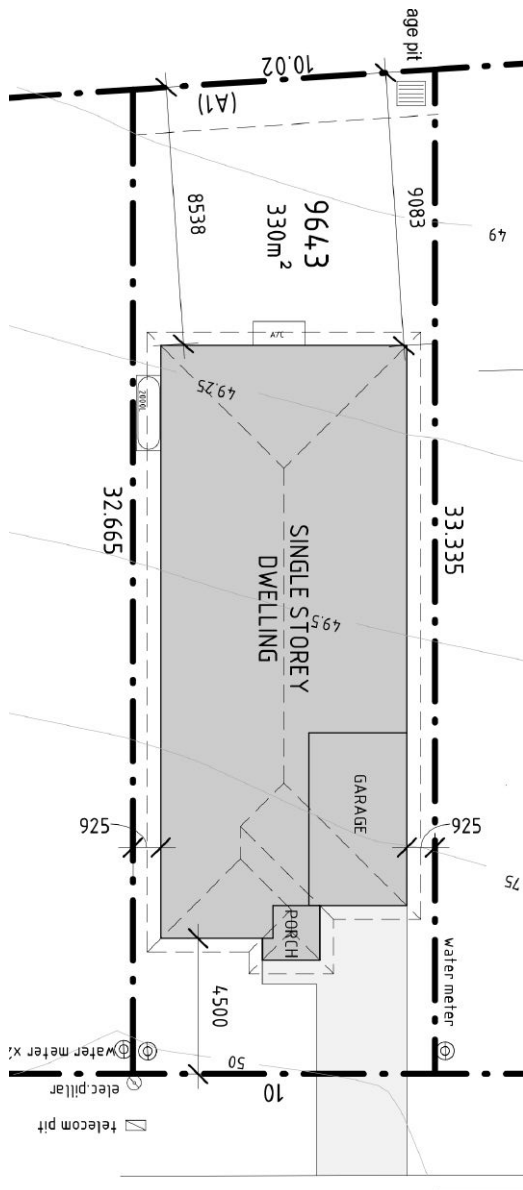


**Everyday Homes**  
Live well in every way

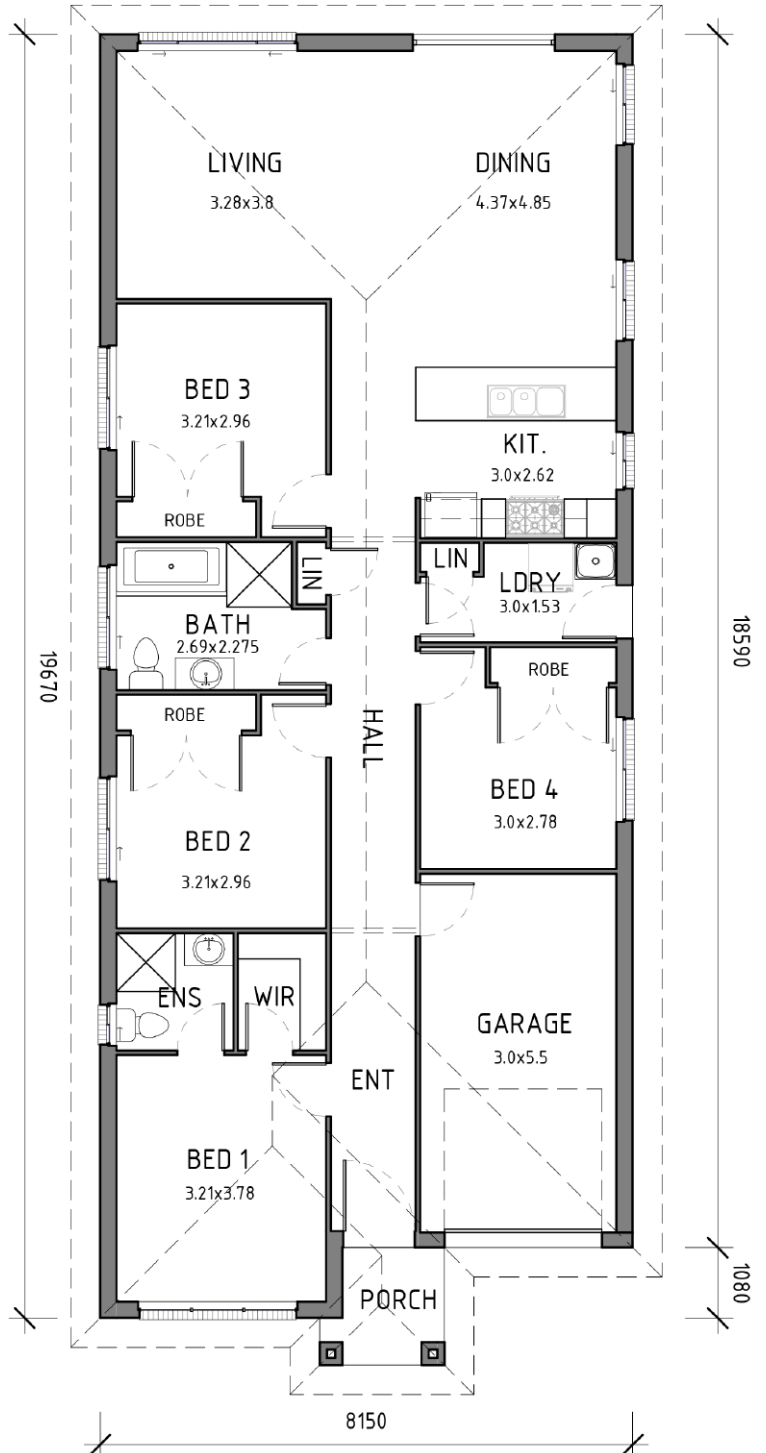


# HOME AND LAND PACKAGE

Aston 17 (Como Facade)  
Lot 9643 Neville Street, Oran Park



AREA CALCULATIONS	
SITE AREA	330m <sup>2</sup>
GROUND FLOOR	136.9m <sup>2</sup>
GARAGE	18.62m <sup>2</sup>
PORCH	3.06m <sup>2</sup>
TOTAL HOME	158.58m <sup>2</sup>
ROOF AREA	185.07m <sup>2</sup>



**DISCLAIMER**

While the material contained in this brochure has been prepared with all due care Everyday Homes Pty Ltd (Everyday Homes) does not warrant that the material is free from errors or omissions or that it is exhaustive. Whilst the material is considered to be true and correct at the date of publication changes in circumstances after the time of publication may impact upon the accuracy of material. This includes, but is not limited to, changes brought upon by third parties and government instrumentalities. All purchasers should satisfy themselves as to the accuracy of the information in this brochure through their own enquiries and by consultation with lawyers, government authorities or other appropriate consultants. Builders Licence Number: 32307