



HOME AND LAND PACKAGE

Aston 17 (Porto Facade)
Lot 7012 Drover Street, Oran Park

Porto Facade

Complete Living Package



Illustrative purpose only

INCLUSIONS - Turn-key Home and Land Package

- Fixed Site Costs
- 180 day maintenance period (double industry standard)
- 2585mm high ceilings
- Floor tiles to living area
- Carpet to remainder
- Concrete driveway
- Vertical blinds to all clear glazed windows
- Instantaneous Rinnai V1500 gas hot-water system
- Insulation (R1.5 walls & R2.5 ceilings)
- Aqua flick mixer taps to vanities, baths & showers
- Double power points
- Exhaust fans to showers
- Perimeter framed shower screen with frameless pivot door
- Toilet suites-closed coupled vitreous china
- B&D Panelmasta garage door
- Semi wall hung vanities with 20mm stone top & drop in bowl
- Category 2 brick range
- Category 2 roof tile range with heavy duty sarking
- 20mm stone kitchen benchtop with square edge finish
- Sheen finish kitchen cupboards
- 900mm cooktop & canopy rangehood
- Alarm
- Electric garage door
- Ducted Air-conditioning

4 Bed

2 Bath

1 Car

\$649,500*

(less \$10,000 design & landscape rebate if applicable)



Everyday Homes

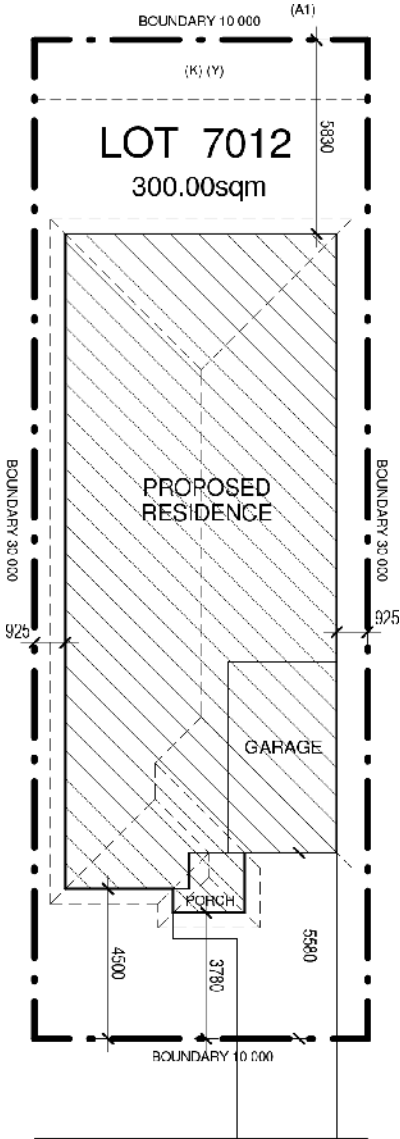
Live well in every way





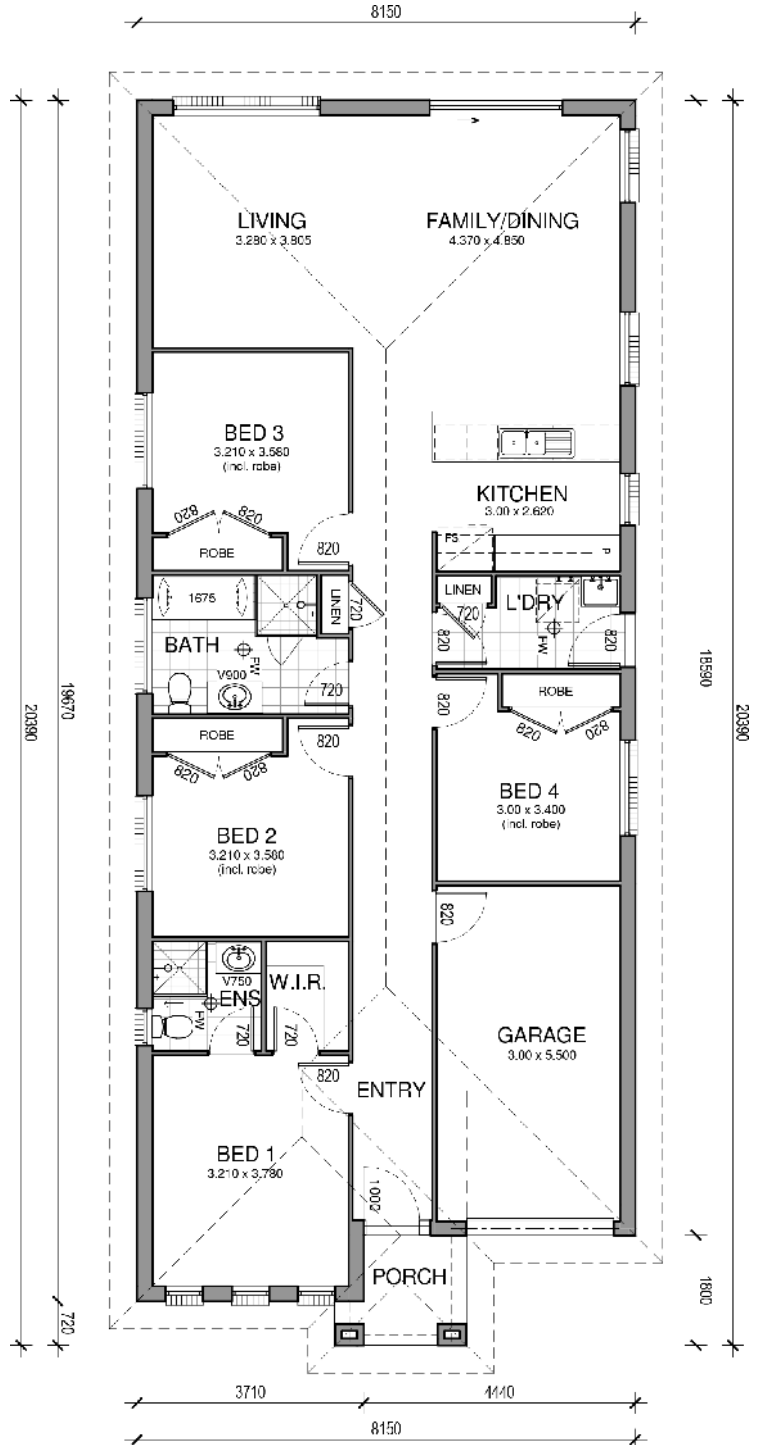
HOME AND LAND PACKAGE

Aston 17 (Porto Facade)
Lot 7012 Drover Street, Oran Park



PROPOSED ROAD

AREA CALCULATION	
Ground Floor	136.89 m ²
Garage	18.62 m ²
Porch	3.35 m ²
TOTAL	158.86 m²



DISCLAIMER

While the material contained in this brochure has been prepared with all due care Everyday Homes Pty Ltd (Everyday Homes) does not warrant that the material is free from errors or omissions or that it is exhaustive. Whilst the material is considered to be true and correct at the date of publication changes in circumstances after the time of publication may impact upon the accuracy of material. This includes, but is not limited to, changes brought upon by third parties and government instrumentalities. All purchasers should satisfy themselves as to the accuracy of the information in this brochure through their own enquiries and by consultation with lawyers, government authorities or other appropriate consultants. Builders Licence Number: 32307



1300 72 55 00
www.everydayhomes.com.au