

# HOME AND LAND PACKAGE

Custom Double Storey Terrace Home  
Lot 10 of Lot 33 Podium Way, Oran Park

**TORRENS TITLE**



**LOCATION! LOCATION! LOCATION!**

Illustrative purpose only

## INCLUSIONS - Turn-key Home and Land Package

- Fixed Site Costs
- 180 day maintenance period (double industry standard)
- 2585mm high ceilings
- 60cm x 60cm Porcelain floor tiles to open living area
- Carpet to remainder
- Concrete driveway
- Vertical blinds to all clear glazed windows
- Instantaneous Rinnai V1500 gas hotwater system
- Insulation (R1.5 walls & R2.5 ceilings)
- Aqua flick mixer taps to vanities, baths & showers
- Double power points
- Exhaust fans to showers
- Perimeter framed shower screen with frameless pivot door
- Toilet suites-closed coupled vitreous china
- B&D Panelmasta garage door
- Semi wall hung vanities with 20mm stone top & drop in bowl
- Category 2 brick range
- 20mm stone kitchen benchtop with square edge finish
- Sheen finish kitchen cupboards
- 900mm freestanding cooker & canopy rangehood
- Alarm
- Electric garage door
- Ducted Air-conditioning
- Landscaping & Fencing Package

**\$759,500\***

**4 Bed**

**2.5 Bath**

**2 Car**

**COREBUILD SYSTEM**

**Complete  
Living  
Package**



Home Building  
SINCE  
**1981**

ONLY  
**5%**  
DEPOSIT



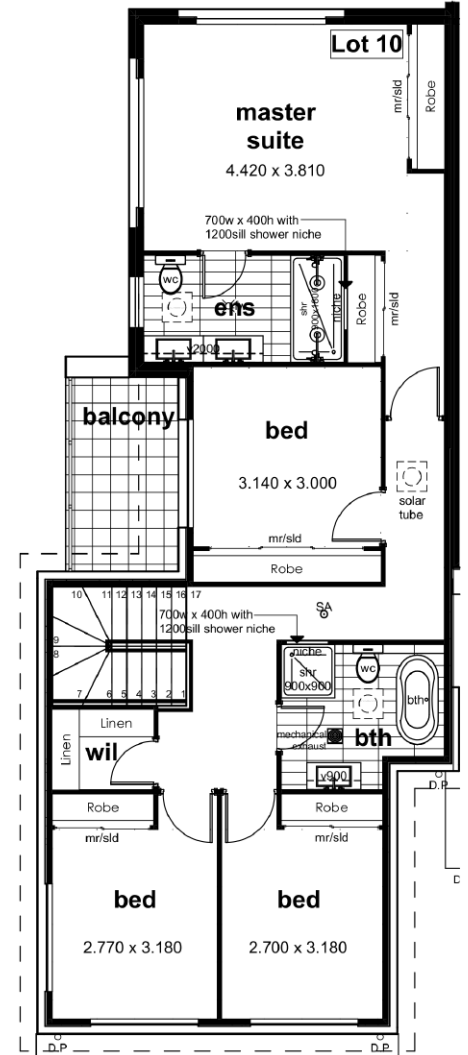
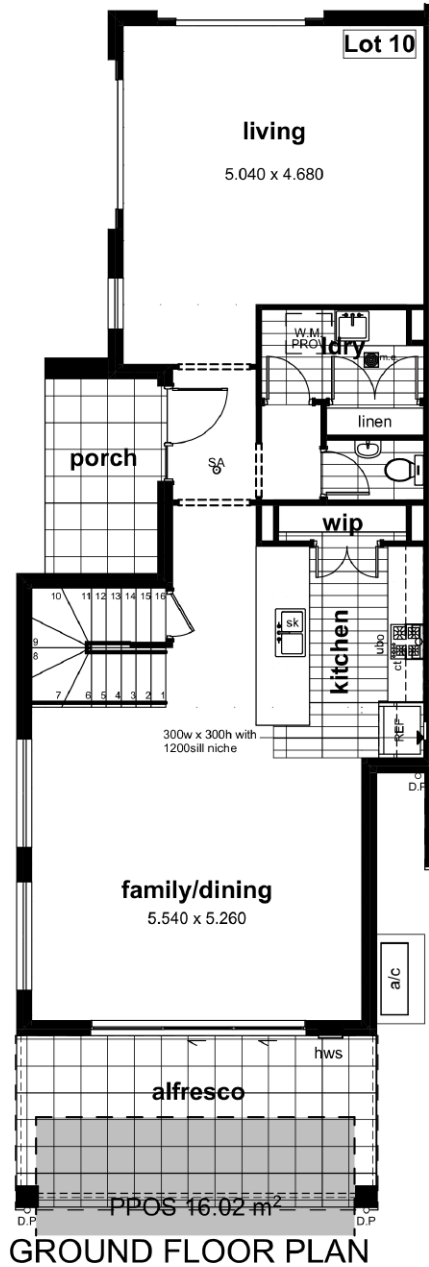
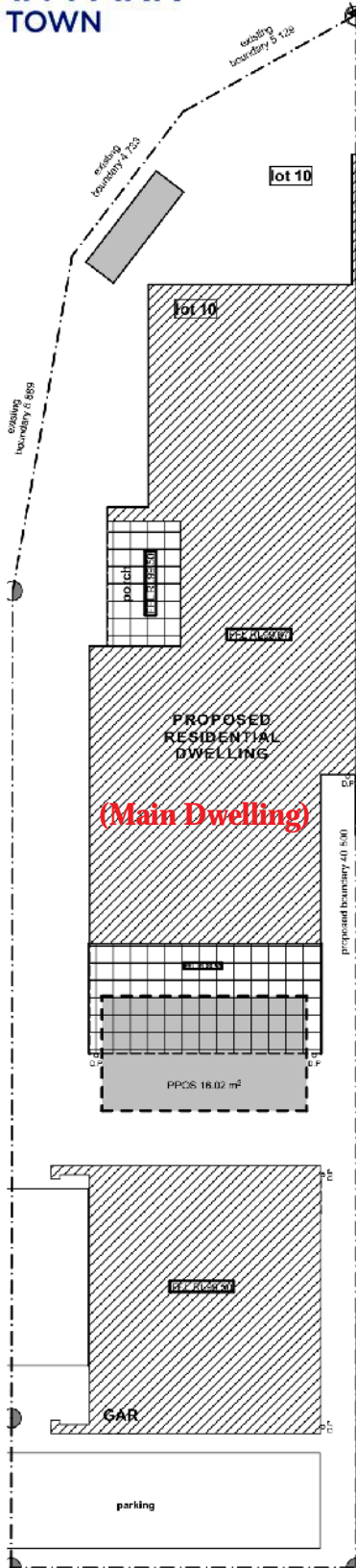
**Everyday Homes**

Live well in every way

# HOME AND LAND PACKAGE

Custom Double Storey Terrace Home  
Lot 10 of Lot 33 Podium Way, Oran Park

**TORRENS TITLE**



**LEVEL 1 FLOOR PLAN**

<b>LOT 10</b>	
Site Area:	328.74m <sup>2</sup>
Ground Floor Area:	98.46m <sup>2</sup>
Level 1 Floor Area:	90.57m <sup>2</sup>
Garage:	35.04m <sup>2</sup>
Alfresco:	17.40m <sup>2</sup>
Porch:	6.16m <sup>2</sup>
Balcony:	6.16m <sup>2</sup>
<b>Total Area:</b>	<b>253.43m<sup>2</sup></b>

**DISCLAIMER**

While the material contained in this brochure has been prepared with all due care Everyday Homes Pty Ltd (Everyday Homes) does not warrant that the material is free from errors or omissions or that it is exhaustive. Whilst the material is considered to be true and correct at the date of publication changes in circumstances after the time of publication may impact upon the accuracy of material. This includes, but is not limited to, changes brought upon by third parties and government instrumentalities. All purchasers should satisfy themselves as to the accuracy of the information in this brochure through their own enquiries and by consultation with lawyers, government authorities or other appropriate consultants. Builders Licence Number: 32307