

# HOME AND LAND PACKAGE

Double Storey  
Lot 14 Drues Rd, Edmondson Park

**REGISTERED LAND!**

Complete  
Living   
Package



**NEXT DOOR TO ST FRANCIS CATHOLIC COLLEGE!  
WALKING DISTANCE TO TRAIN STATION!**

Illustrative purpose only

## INCLUSIONS - Turn-key Home and Land Package

- Fixed Site Costs
- 180 day maintenance period (double industry standard)
- 2585mm ceilings to ground floor
- Ceramic Floor tiles to open living area \$ from builders range
- Carpet to remainder
- Concrete driveway
- Vertical blinds to all clear glazed windows
- Instantaneous Rinnai V1500 gas hot-water system
- Insulation (R1.5 walls & R2.5 ceilings)
- Aqua flick mixer taps to vanities, baths & showers
- Double power points
- Exhaust fans to showers
- Perimeter framed shower screen with frameless pivot door
- Toilet suites-closed coupled vitreous china
- B&D Panelmasta garage door
- Semi wall hung vanities with 20mm stone top & drop in bowl
- Category 2 brick range
- Category 2 roof tile range with heavy duty sarking
- 20mm stone kitchen benchtop with square edge finish
- Freestanding cooktop & matching canopy rangehood
- Sheen finish kitchen cupboards
- Electric Garage Door
- Alarm
- Ducted Air Conditioning

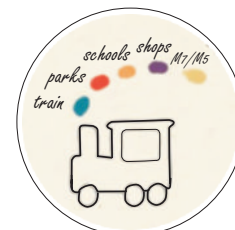
# \$729,500\*

4 Bed

2 Bath

1 Car

COREBUILD SYSTEM



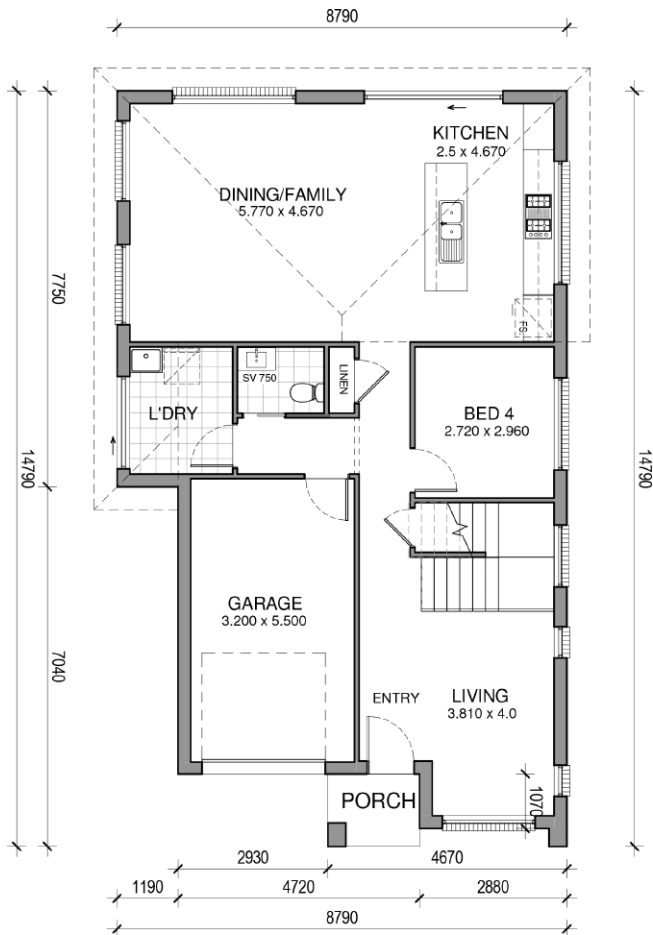
Everyday Homes  
Live well in every way

Home Building  
SINCE  
1981

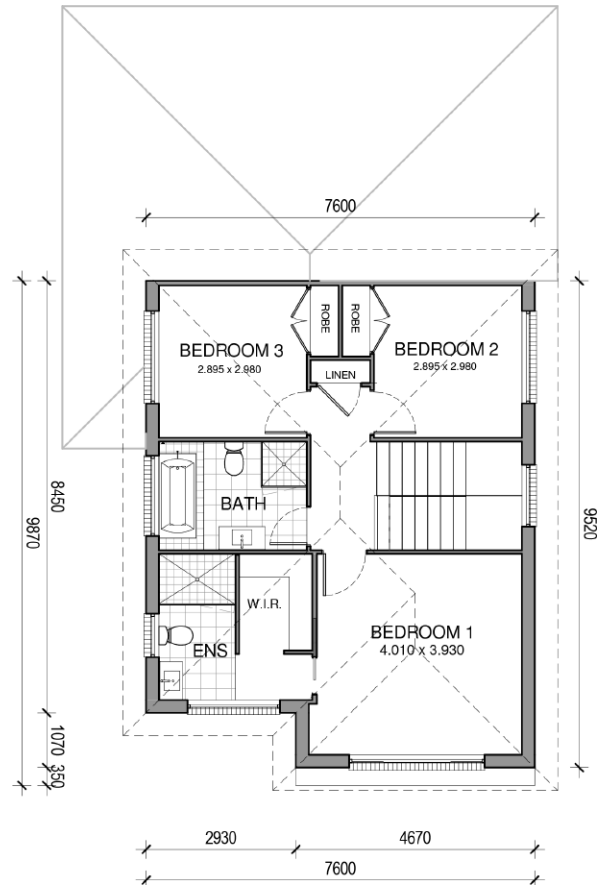
Early Bird  
Special  
SAVE \$\$\$

# HOME AND LAND PACKAGE

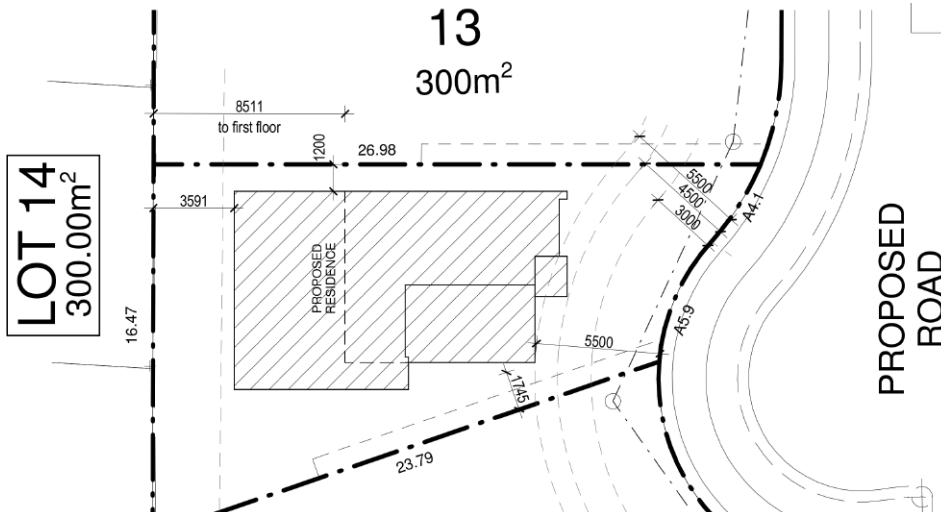
Double Storey  
Lot 14 Drues Rd, Edmondson Park



GROUND FLOOR



FIRST FLOOR



AREA CALCULATION	
GROUND FLOOR	94.10 m <sup>2</sup>
FIRST FLOOR	69.22 m <sup>2</sup>
GARAGE	19.94 m <sup>2</sup>
PORCH	2.54 m <sup>2</sup>
<b>TOTAL</b>	<b>185.80 m<sup>2</sup></b>

**DISCLAIMER**

While the material contained in this brochure has been prepared with all due care Everyday Homes Pty Ltd (Everyday Homes) does not warrant that the material is free from errors or omissions or that it is exhaustive. Whilst the material is considered to be true and correct at the date of publication changes in circumstances after the time of publication may impact upon the accuracy of material. This includes, but is not limited to, changes brought upon by third parties and government instrumentalities. All purchasers should satisfy themselves as to the accuracy of the information in this brochure through their own enquiries and by consultation with lawyers, government authorities or other appropriate consultants. Builders Licence Number: 32307