

# HOME AND LAND PACKAGE

4 Bed Double Storey + Granny Flat

Lot 223 Road No.1, Austral

**Novel Facade**

**Complete Living**   
**Package**



**LIVE IN ONE, COLLECT RENT FROM THE OTHER!**

Illustrative purpose only

## INCLUSIONS – Turn-key Home & Land Package

- Fixed Site Costs
- 180 day maintenance period (double industry standard)
- 2585mm high ceilings
- Floor tiles to living area's
- Carpet to remainder
- Concrete driveway
- Vertical blinds to all clear glazed windows
- Instantaneous Rinnai V1500 gas hotwater system
- Insulation (R1.5 walls & R2.5 ceilings)
- Aqua flick mixer taps to vanities, baths & showers
- Double power points
- Exhaust fans to showers
- B&D Panelmasta garage door
- Perimeter framed shower screen with frameless pivot door
- Toilet suites-closed coupled vitreous china
- Semi wall hung vanities with 20mm stone top & drop in bowl
- Category 2 brick range
- Category 2 roof tile range with heavy duty sarking
- 20mm stone kitchen benchtop with square edge finish
- Sheen finish kitchen cupboards
- 900mm freestanding cooker & canopy rangehood
- Alarm
- Electric garage door
- Ducted Air-conditioning

**\$1,035,500**

4 Bed

2.5 Bath

1 Car

**COREBUILD SYSTEM**

**PLUS GRANNY FLAT**

Home Building  
SINCE  
**1981**



**Everyday Homes**

Live well in every way

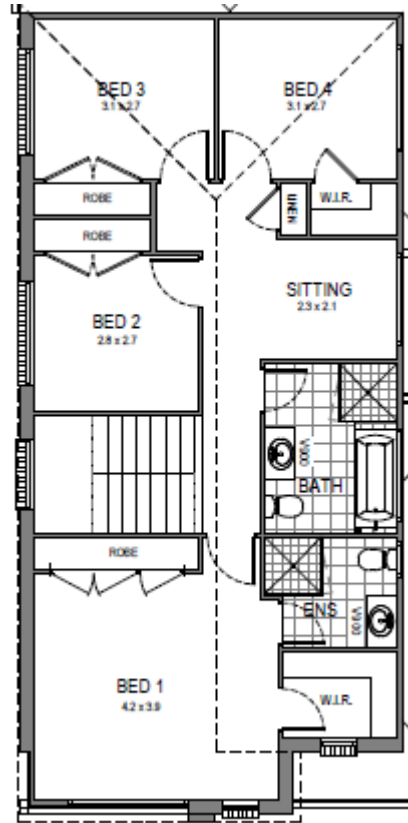
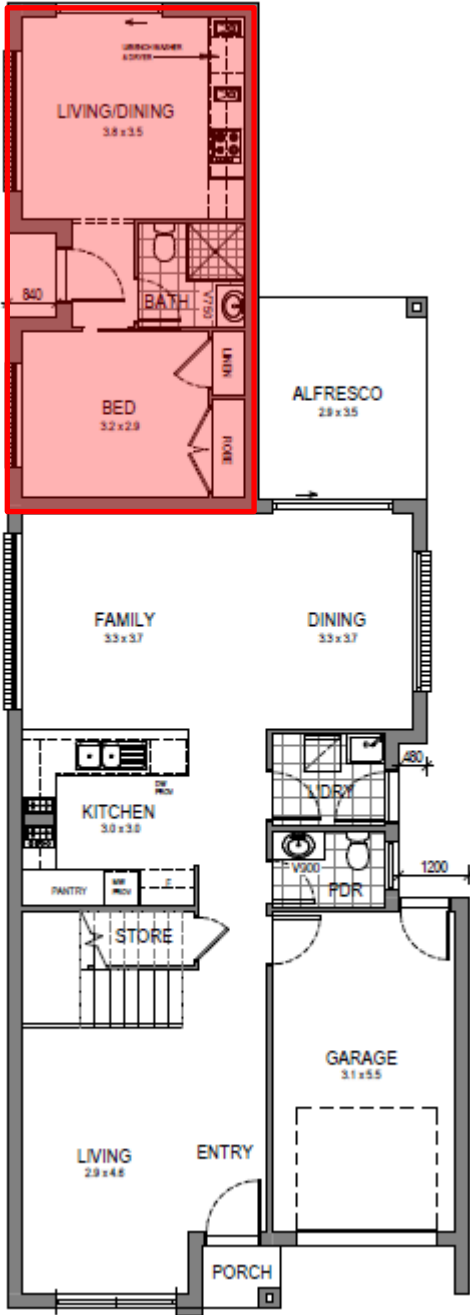


**Early Bird  
Special**

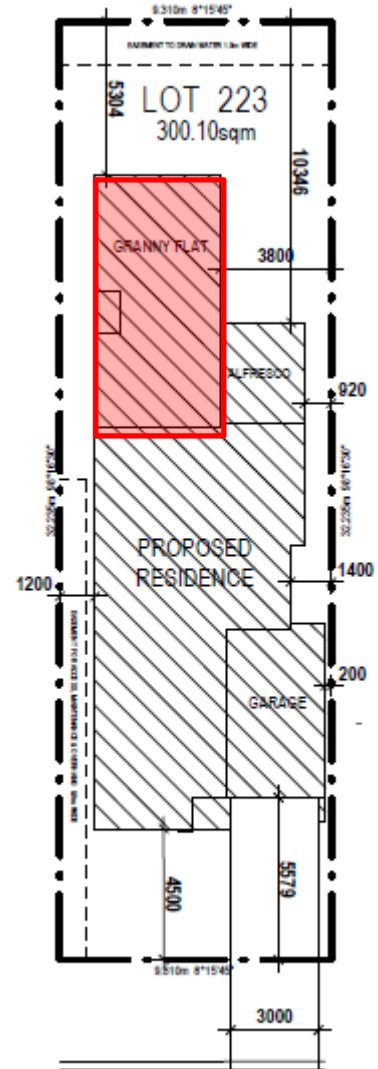
**SAVE \$\$\$**

# HOME AND LAND PACKAGE

4 Bed Double Storey + Granny Flat  
Lot 223 Road No.1, Austral



AREA CALCULATION	
01. Ground Floor	78.77 m <sup>2</sup>
02. First Floor	88.03 m <sup>2</sup>
03. Garage	19.64 m <sup>2</sup>
04. Alfresco	10.02 m <sup>2</sup>
05. Porch	1.43 m <sup>2</sup>
06. Granny Flat	36.00 m <sup>2</sup>
07. GFlat Porch	1.22 m <sup>2</sup>
<b>TOTAL</b>	<b>235.11 m<sup>2</sup></b>



PROPOSED ROAD



**DISCLAIMER**

While the material contained in this brochure has been prepared with all due care Everyday Homes Pty Ltd (Everyday Homes) does not warrant that the material is free from errors or omissions or that it is exhaustive. Whilst the material is considered to be true and correct at the date of publication changes in circumstances after the time of publication may impact upon the accuracy of material. This includes, but is not limited to, changes brought upon by third parties and government instrumentalities. All purchasers should satisfy themselves as to the accuracy of the information in this brochure through their own enquiries and by consultation with lawyers, government authorities or other appropriate consultants. Builders

Licence Number: 32307